

open

**evolve**<sup>™</sup>  
Advanced Digital Solutions

**ev**  
Advanc



NW140-E  
NW210-E  
**LABEL**  
INTENSIVE  
THINKING



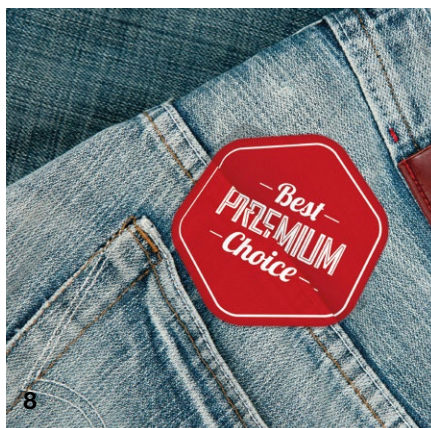


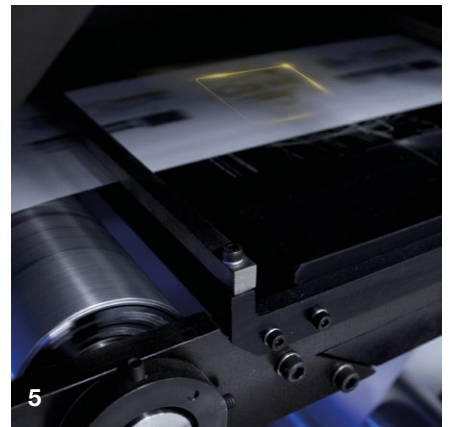
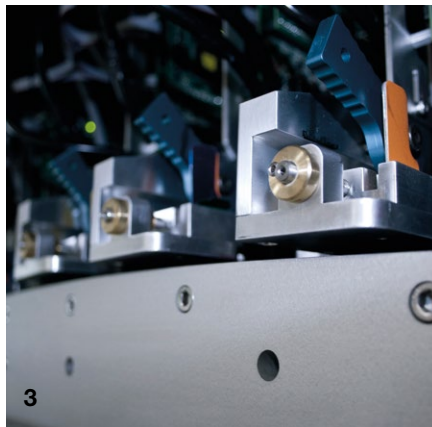
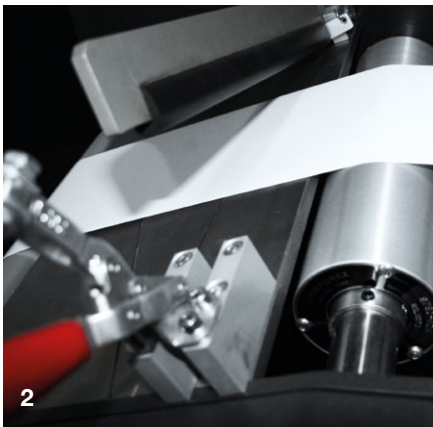
ADVANCED DIGITAL TECHNOLOGY FOR NARROW WEB PRINTING



# IT'S NOT JUST A LABEL PRESS BUT A REAL BUSINESS TOOL

1-3 Food & Beverage /  
4 Household care / 5 Personal care /  
6 Pharmaceutical / 7 Industrial /  
8 Garments / 9 Promotional





ADVANCED DIGITAL TECHNOLOGY FOR NARROW WEB PRINTING

# ADAPTABLE FLEXIBLE PROFITABLE EASY-TO-USE VERSATILE

## 1 Control Workstation

A powerful double-screen workstation allows the operator to easily check and manage every part of the system, from file upload and mechanical/laser settings to printheads and hydraulic adjustments.

## 2 Mounting Station

Once the new roll is fixed on unwinder, it's easy to feed it using the bending knife and hook it up to the existing strip. Drive the web and tighten it through the whole path in just a few minutes.

## 3 Printing Unit

The beating heart of the NW140/E and NW210/E printers are their easily accessible printing tower, equipped with six stations (*CMYK, White and optional Varnish*) and a total of 12 Xaar 1002 industrial inkjet printheads, with a smallest droplet size of 6 picoliters.

## 4 Web Cleaning Unit

Utilizes two groups of cleaning rollers combined with rubber rollers to remove dust and dirt. The two anti-static units remove any remaining electric charges.

## 5 Laser Die-Cutting

A fully-integrated end-to-end workflow is guaranteed by the in-line laser cutting unit. It allows the seamless production of any type of labels starting from digital design to finished product.

## 6 Heavy-duty rewinder

Finished labels, perfectly printed, cured and cut, are instantly rewound on a motorized roll. Through a quick and easy operation they can be removed, packed and made available for customer delivery and application.

## 7 Flood lamination unit

A high-speed cold-lamination unit is available for the flood (*full coverage*) lamination of any labels.

## 8 Corona station

A corona station is available on the NW Series for pre-treatment of substrates with low surface energy. Corona is recommended only for corona-treated plastic materials.

## 9 Variable data

Customers who need numbering, language versioning or fully-customized labels, even starting from a simple PDF or raster file, can count on the powerful variable-data features of NW Series.

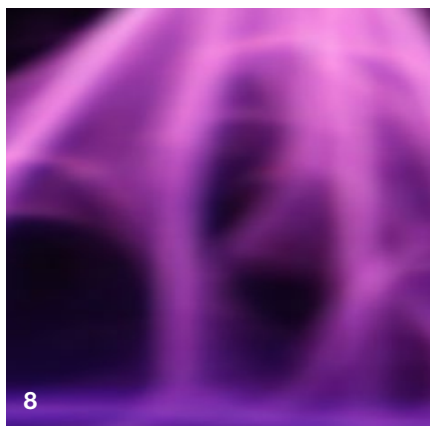
## 10 Roll-to-sheet unit

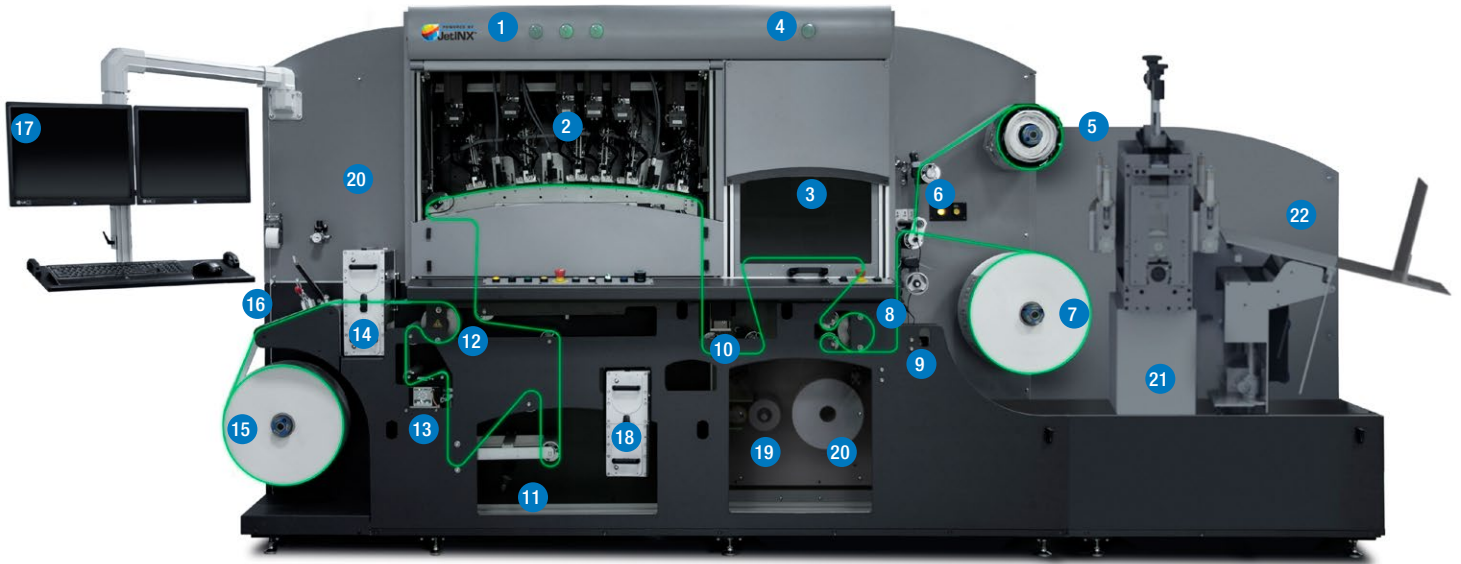
A versatile cross-cutting unit is available for in-line cutting of customized from the printed reel. Easily switch from cut labels to direct-mailing and 1:1 marketing campaigns up to A4 and other sheet-sizes.

## 11 Semi-rotary die-cutting unit

*Optional / In place of laser die-cutting*

A physical die-cutting unit is available for those customers who require the highest customization in terms of texts, colours, languages and quantities, but have standard label-sizes or limited die-cut changes over the year.





- |                                  |                             |                              |                            |
|----------------------------------|-----------------------------|------------------------------|----------------------------|
| (1) Light tower, printer station | (7) Product rewind          | (13) Web steering            | (19) Laminator*            |
| (2) JetiNX printing system       | (8) Back scoring unit       | (14) Web cleaning system     | (20) Laminate roll*        |
| (3) Laser cutting system         | (9) Servo drive             | (15) Unwinder                | (21) Sheeter*              |
| (4) Light tower, laser station   | (10) Final LED UV cure lamp | (16) Splicing table          | (22) Sheet stacking table* |
| (5) Scrap rewind                 | (11) Dancer arm             | (17) Main operator interface |                            |
| (6) Waste weed roller            | (12) Servo drive            | (18) Corona treatment*       | * <i>Optional</i>          |


# NW140-E NW210-E SPECIFICATIONS



## PRINthead TECHNOLOGY

Xaar® 1002 Printheads with an effective resolution of greater than 1000 dpi with 7 drop sizes from 6-42 picoliters  
Xaar® TF Technology™ for improved printer reliability

## AVAILABLE CONFIGURATIONS

CMYK + White / Laser  
CMYK + White / No laser  
CMYK / Laser  
CMYK / No laser  
Varnish (Optional)

## RESOLUTION

Printing resolutions:  
360 x 360 dpi  
720 x 720 dpi

## PRINT SPEED

Up to 80 linear feet per minute (23 meters per minute)

## NW140/E MEDIA HANDLING

Print width:  
up to 5.50" (140 mm)  
Maximum Media  
Width: 8.00" (203 mm)  
Weight: 150 lbs (70kg)  
Diameter: 24" (610 mm) on 3" (76 mm) core

## NW210/E MEDIA HANDLING

Print width:  
up to 8.25" (210 mm)  
Maximum Media  
Width: 8.75" (222 mm)  
Weight: 150 lbs (70kg)  
Diameter: 24" (610 mm) on 3" (76 mm) core

## UV CURING SYSTEM

Low Heat UV LED Pinning and Curing Systems

## INKS

Environmentally friendly UV curable inks specially formulated for high-speed single pass web printing on a variety of media types

## NW140/E LASER DIE CUTTING

Spartanics X140 100W Laser Cutting Station  
Cutting Area  
Length: Infinite  
Height: 7.87" (200 mm)

## NW210/E LASER DIE CUTTING

Spartanics X210 200W Laser Cutting Station  
Cutting Area  
Length: Infinite  
Height: 8.25" (210 mm)

## ELECTRICAL

Printer:  
208-240 VAC 60 Amps  
3 Phase 50/60Hz  
Chiller:  
208-240 VAC 40 Amps  
3 Phase 50/60Hz

## OPERATING CONDITIONS

65-85 degrees F (18-30 C)  
20% to 80% relative humidity

## PHYSICAL DIMENSIONS

Printer:  
Approx 175"W x 56"D x 83"H, 3500 lbs.  
(Including Spartanics Laser Cutting Station)  
Chiller: 37"W x 44"H

## MEDIA

Paper, polyester, biaxially oriented polypropylene (BOPP), polypropylene (PP), metalized media, and thin aluminum (<0.1mm thick)

## IMAGE PROCESSING SYSTEM

Onyx Thrive  
Onyx Production House

## OPTIONS

Varnish (inkjet) /  
Corona Treatment /  
400 Watt Laser /  
Sheeter /  
Slitter /  
Laminator

  
 inxevolve.com



**Verygood**  
 evolve

**PRIMER**  
 STRENGTHENING  
 PREPARE  
 FIGHTING  
 PRIMERS  
 CLEANERS

**evolve**  
 Digital Solutions

**Label Intensive Thinking**  
 Make-ready times, process costs and job switch reduced to (almost) zero.  
**50,000+ pieces of labels and flexible packaging per day!\***

  
**NW140**  
 Industrial Inkjet Narrow Web Press  
 POWERED BY  
**JetINX**

\*50,000 pieces @ 5" x 3.5" x 24 hour



**INX International Ink Co.**  
 150 N. Martingale Rd Sui  
 Schaumburg, IL 60173  
 PH. (800) 631-7956  
 info@inxintl.com

**INX<sup>®</sup>**