

DATA SHEET

	GP 1200	GP 1600	GP 2000
WORKING AREA	1200x800 mm	1600x1200 mm	2000x1600 mm
WORKING PLAN HEIGHT	950 mm	950 mm	950 mm
MACHINE DIM. WITHOUT CONSOLE	1870x1370x2500 mm	2270x1770x2500 mm	2670x2170x2500 mm
MACHINE DIM. WITH CONSOLE (WxDxH)	2200x1800x2500 mm	2600x2200x2500 mm	3000x2600x2500 mm
WEIGHT	350 kg	420 kg	500 kg
SPEED	1 - 1700 mm/sec	1 - 1700 mm/sec	1 - 1700 mm/sec
ELECTRICAL CONNECTION	220/400 V - 50/60 Hz	220/400 V - 50/60 Hz	220/400 V - 50/60 Hz

- Technical data here reported are subject to change without notice
- On request, plotter with different working area can be manufactured

Other series of **Angeleri** machines available



GP/S series 2 axis gluing plotter for water based adhesive spray



GS series 3 axis gluing machines without vision system



GSV series 3/5 axis gluing machines with vision system



Complete range of gluing machines for hot melt - vinylic - water and solvent based adhesives

GP Series

Intelligent automatic
gluing plotter
with integrated CAD-CAM system

Unmatched
Ease of use
Speed of execution



Angeleri
intelligent gluing systems

Officina Meccanica **Angeleri** Srl
Via Ruffini 15/3 - 27029 - Vigevano (PV) - Italy
Tel. +39.0381.71519 - Fax +39.0381.72742
info@angeleri.it - www.angeleri.it

Angeleri
intelligent gluing systems

GP Series automatic gluing

We developed **intelligent** machines for automatic

- Significantly increase the productivity, compared to manual operation, thanks to working and rapid positioning speed (100 m/min)
- Achieve superior and consistent quality in glue deposition, together with absolute repeatability and accuracy of trajectories
- Optimize the number of workers needed for gluing and assembly operations. While the machine deposits the adhesive, the worker can assembly in "hidden" time the part already glued



Glue deposition

The tool head can install up to 3 different nozzles, for the following type of glue deposition :

- Hot Melt line
- Hot Melt spray
- Vinylic line



Worker safety

GP series plotter are equipped with double photoelectric safety barriers type 2, to guarantee the necessary protection during working operations



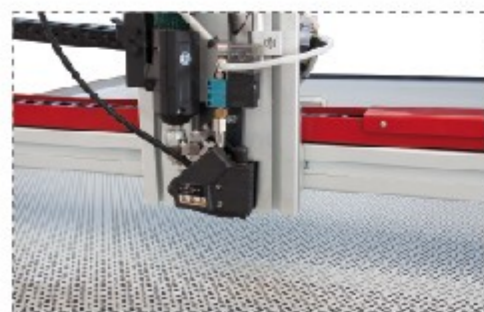
Operator console
The CAD-CAM program is installed on a PC on machine board, positioned on an ergonomic adjustable support, for a comfortable management of the production process



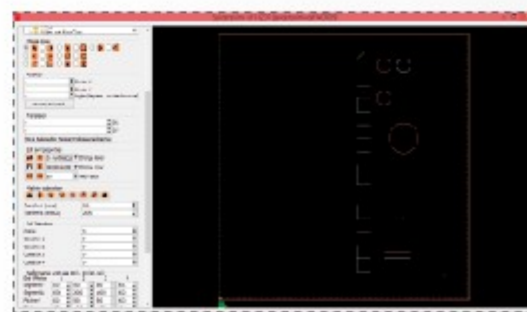
Fix working plan and vertical feeding system

GP series plotter are configured in their standard version with a fix working plan, while one or two vertical feeding systems can be installed as an option, to load from the top layers of material to be glued (for over 600 mm in height), that automatically rise and position at the required working height at the end of each single operation

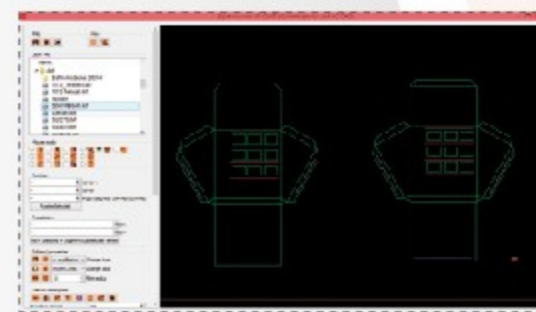
GP Series plotter guarantee **unmatched programming and machine setting flexibility**, thanks to the proprietary CAD-CAM system installed on machine board



Trajectories input on machine board
Using the manual axis movement buttons, the operator move the plotter along the desired deposition path, which is instantly highlighted on the working plan by a laser sensor, and save it



Trajectories design on the monitor
By means of an intuitive user graphic interface, the operator can easily draw on the PC monitor, lines, polylines, circles and arcs that compose the gluing trajectory



DXF file import
It is possible to import gluing trajectories already drawn remotely on the design of parts to be glued, using the standard exchange format DXF

plotter, ease and speed at work

linear glue deposition, that will allow you to:

- Utilize the plotter also for small batch of production, thanks to the ease and speed of machine setting for a new operation
- Start production since day 1st, thanks to the ease, flexibility and speed of use of the proprietary CAD-CAM system installed on machine board, that allow an immediate utilization also to inexperienced operators
- Count on a reliable Partner that assist you choosing the right application and configuration before the purchase and guarantee a fast and qualified after-sale technical service

- It is possible to assign different colors to imported or generated gluing trajectories, according to the type of adhesive to be used for different segments (eg. red color for Hot Melt line nozzle, white color for Vinylic line nozzle, etc.)
- Gluing paths can easily be modified at any time, directly on machine board
- The operator can add or delete segments or change the execution sequence, as well as define specific waiting times

GP Series plotter can be configured to operate from 1 to 4 independent working stations, equipped with automatic parts counter and operator's presence

Angeleri
intelligent gluing systems